

LOC I-DTO 109.1	APP CRS 177°	Rwy Idg 6502
		TDZE 640
		Apt Elev 642

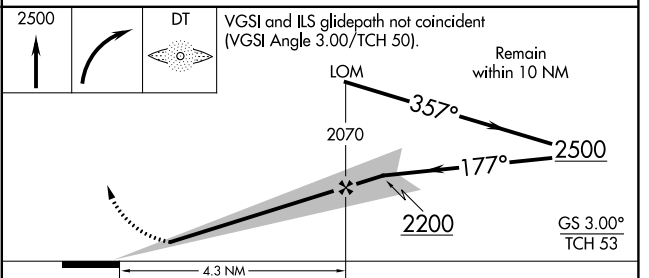
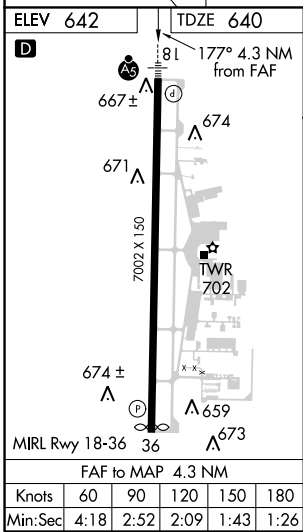
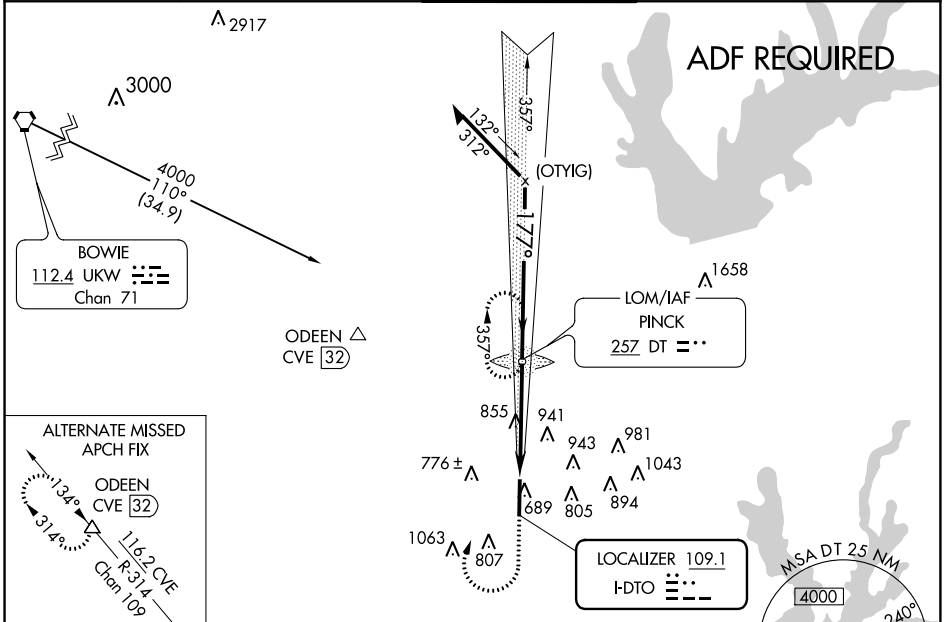
ILS or LOC RWY 18

DENTON MUNI (D'TO)

NA ADF Required. When local altimeter setting not received, use Fort Worth Alliance altimeter setting and increase all DA 44 feet and all MDA 60 feet, increase S-LOC 18 Cat C/D and Circling Cat D visibility 1/4 mile. For inoperative MALSRL, increase S-LOC 18 visibility Cats C and D to 1 3/8 mile.

MALSRL MISSED APPROACH: Climb to 2500 then right turn direct PINCK LOM and hold.

ASOS 119.325	REGIONAL APP CON 118.1 306.95	DENTON TOWER★ 119.95 (CTAF) 0	GND CON 123.95	CLNC DEL 123.95
------------------------	---	---	--------------------------	---------------------------



CATEGORY	A	B	C	D
S-ILS 18		840-1/2	200 (200-1/2)	
S-LOC 18	1120-1/2	480 (500-1/2)	1120-1	480 (500-1)
CIRCLING	1160-1	518 (600-1)	1160-1/2 518 (600-1/2)	1260-2 618 (700-2)

SC-2, 15 OCT 2015 to 12 NOV 2015

SC-2, 15 OCT 2015 to 12 NOV 2015