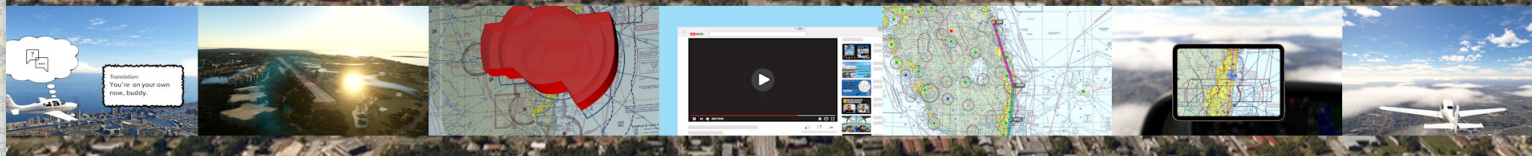


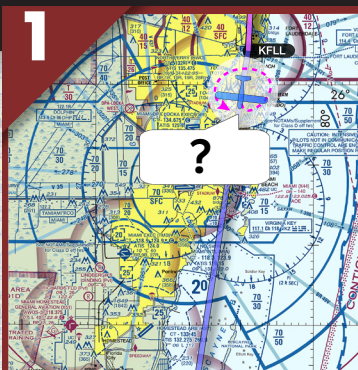
Flight following is the best way to get an extra set of eyes for traffic and keep in touch with ATC inside busy airspace. That's why you planned your trip to use this valuable tool. So what's your next move when ATC decides to cut you loose just when you need flight following the most?

VFR MASTERY

Flight Following Failure



CHOICES



Circle while you clarify that you want a clearance into the Class B over Miami (KMIA). They must have misunderstood.



Turn east to follow the coastline, even though you'll need to fly low over Miami Beach and there's a 7-mile overwater section to Ocean Reef (07FA) that's well offshore.

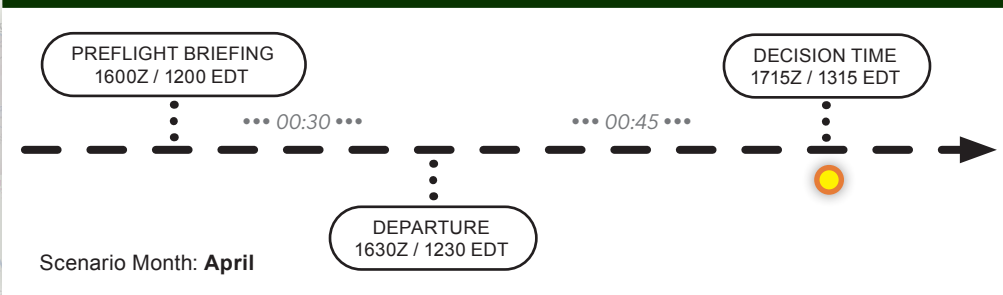


Turn east until clear of the Class B shelf and climb to cross the Class B above 7000', even though it means a steep descent on the other side.



Turn west to overfly the Class Ds and then hug the underside of the Class B as close as you can to minimize the diversion and time over the swamp.

Timeline



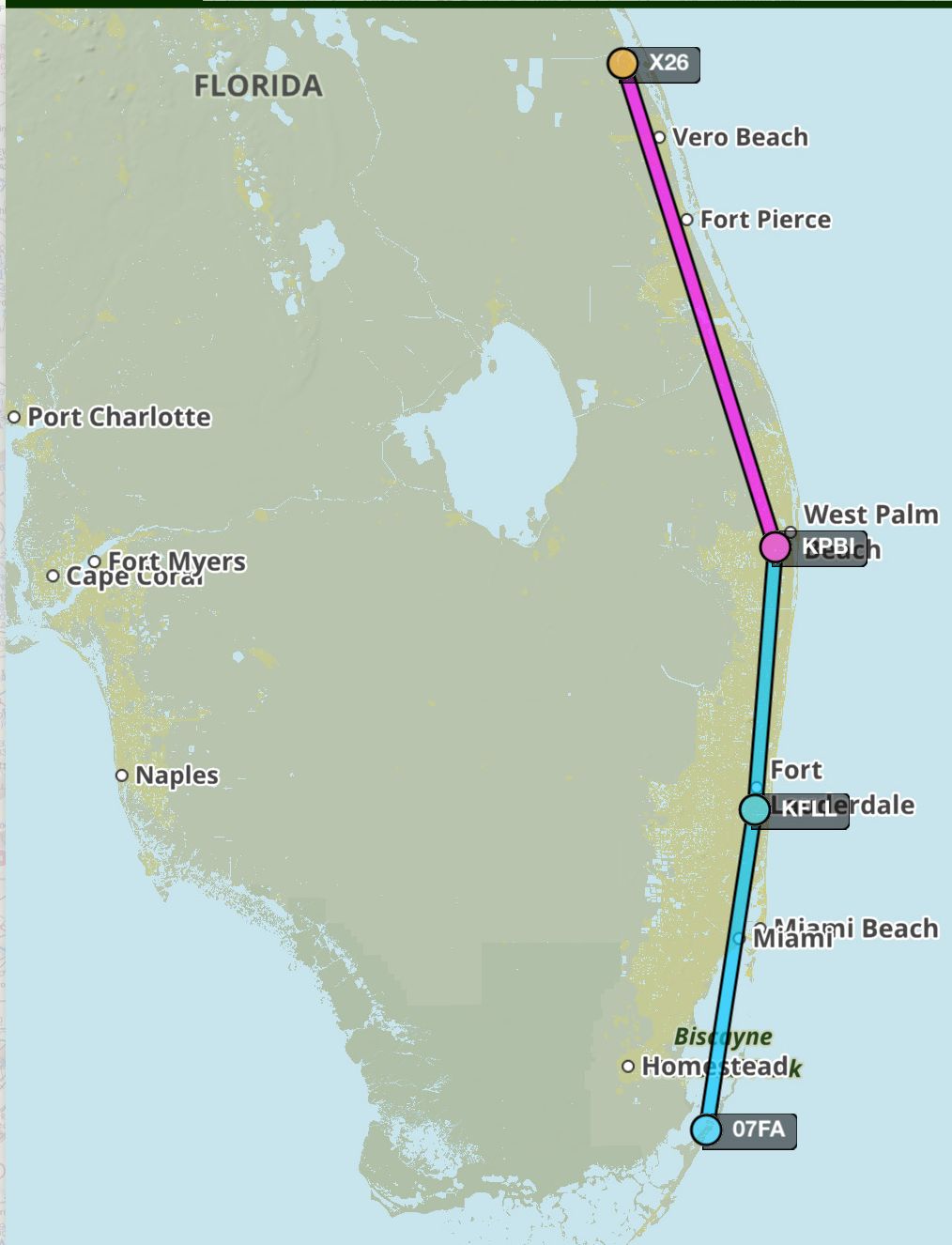
Flight Planning Information

Aircraft Cirrus SR22T	Estimated Flight Time (hh:mm) 00:56
Cruise Altitude 7500 feet	Fuel on Board (hh:mm) 05:44
Cruise Speed 170 KTS	Number Aboard 4
Departure X26	Destination 07FA
Route KPBI KFL	

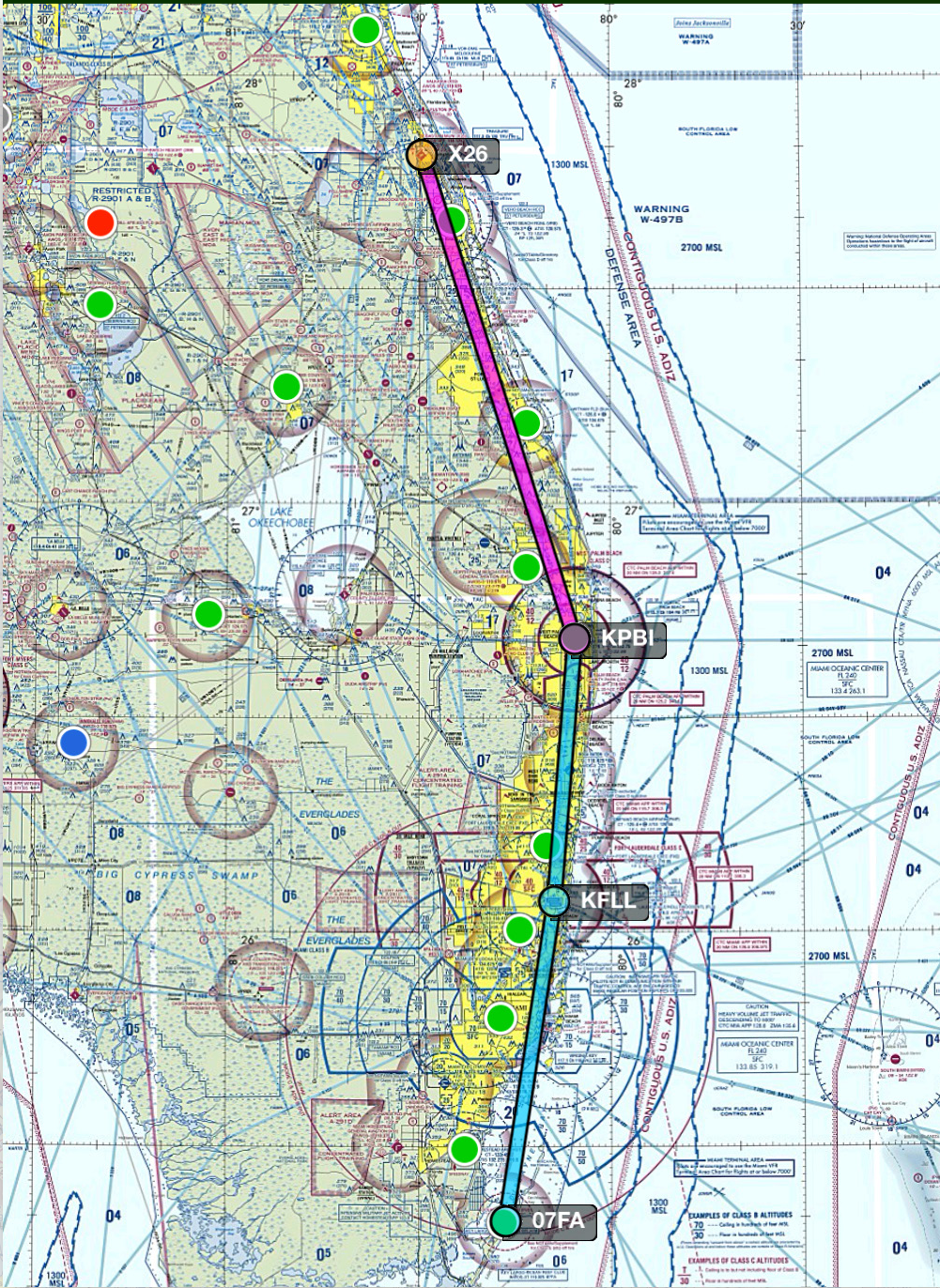
Pilot Experience

Total Time: 800 hours
Time in Type: 225 hours
Instrument-rated

Entire Route



Flight Categories (Preflight)



METARS and TAFs (Preflight)

Departure

X26 - No METAR

Enroute

KPBI 151553Z 07007KT 030V110 10SM SCT040 26/14 A3014

TAF KPBI 151450Z 1515/1612 08011KT P6SM FEW040 SCT060
FM160200 10008KT P6SM SKC
FM160600 10006KT P6SM SKC

KMIA 151553Z 05005KT 10SM FEW045 26/14 A3012

TAF KMIA 151452Z 1515/1618 08012KT P6SM SCT035 SCT060
FM160200 08007KT P6SM FEW040
FM160600 VRB04KT P6SM FEW040
FM161500 10010KT P6SM FEW030 SCT050

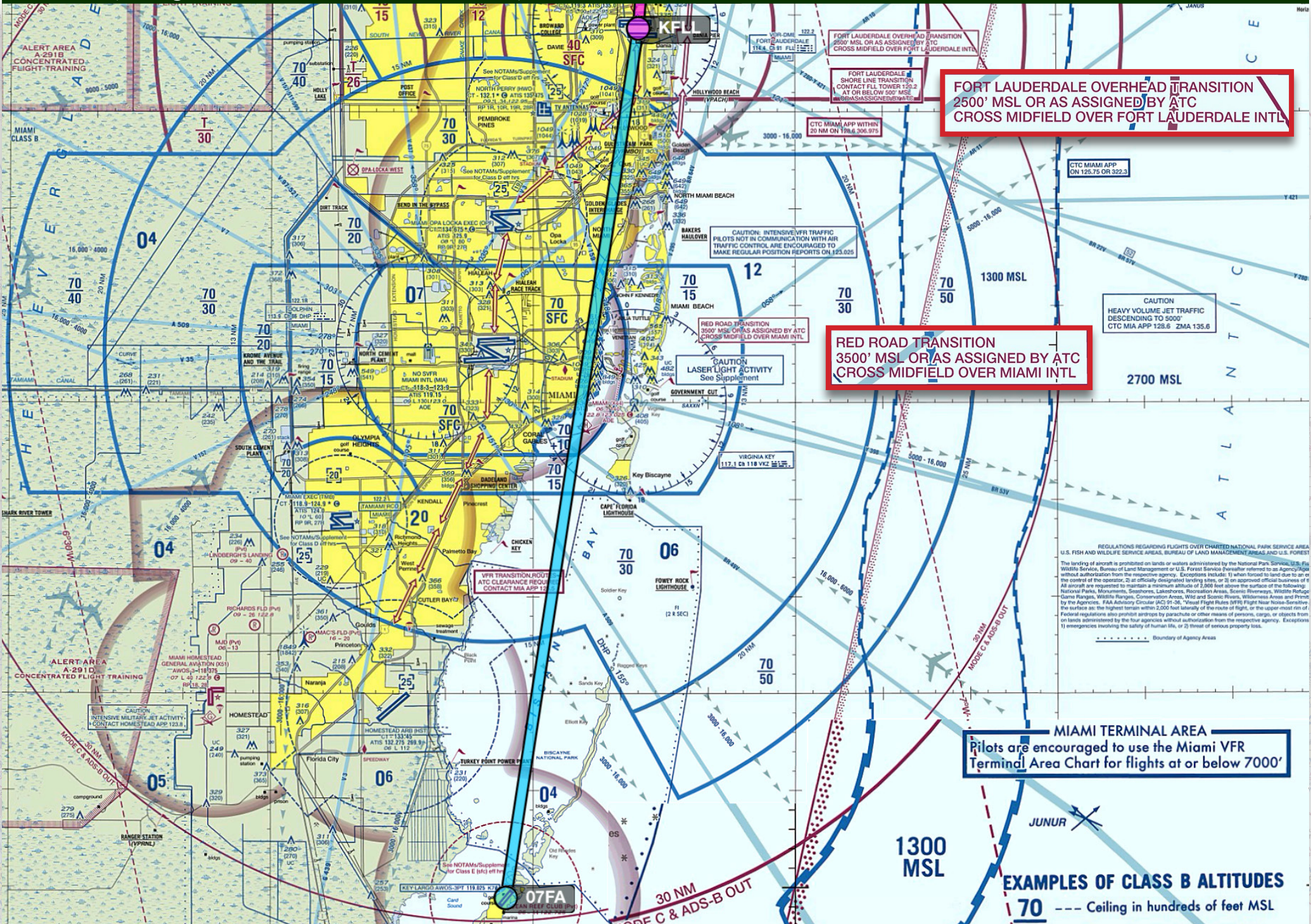
KHST 151555Z AUTO 06008KT 10SM CLR 26/14 A3011

TAF KHST 151100Z 1511/1617 VRB06KT 9999 SCT035 QNH3005INS
BECMG 1513/1514 08012G18KT 9999 FEW035 QNH3006INS
BECMG 1523/1524 07008KT 9999 SCT030 QNH3005INS

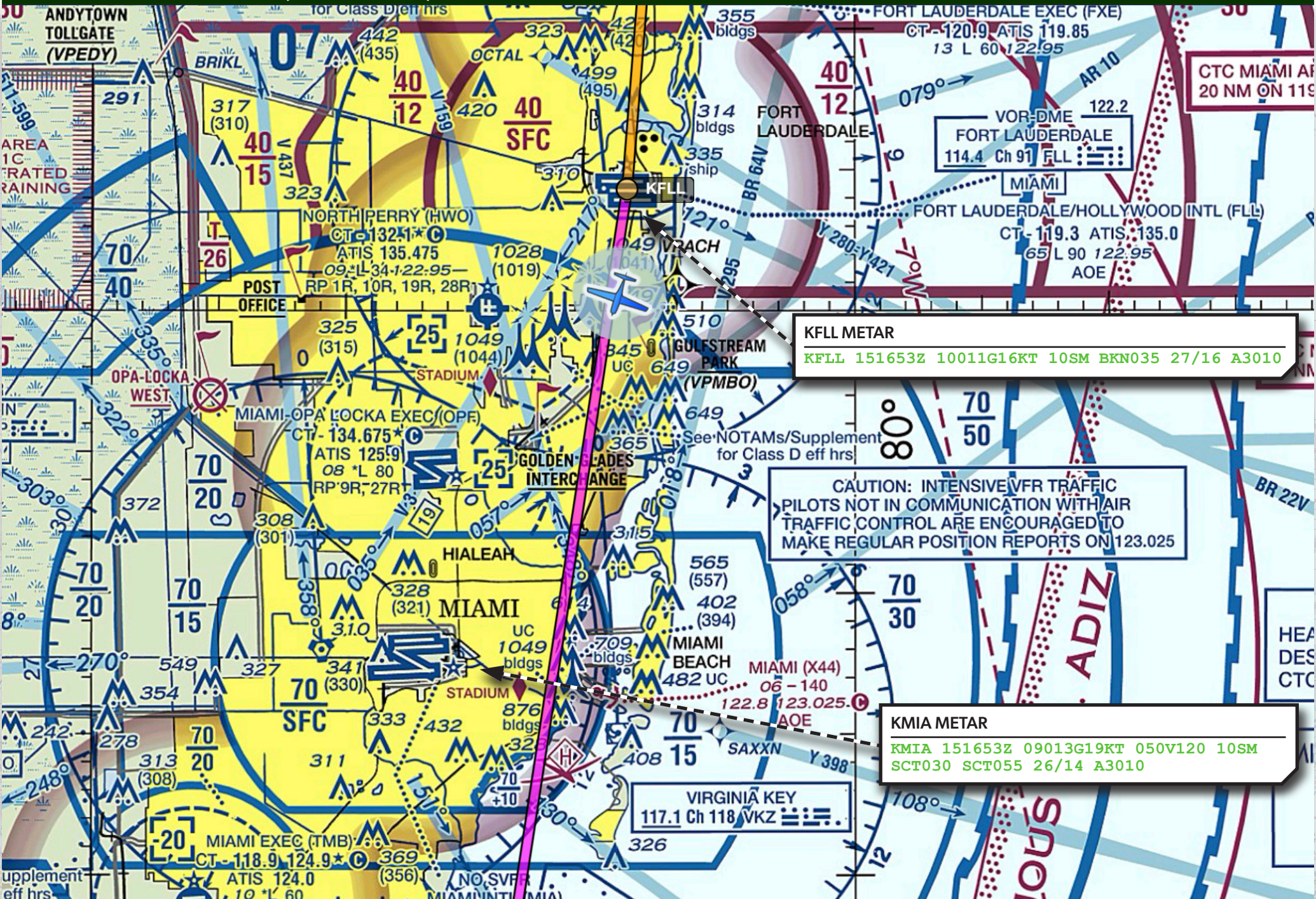
Destination

07FA - No METAR

Miami TAC (Preflight - Not Available at Decision Time)



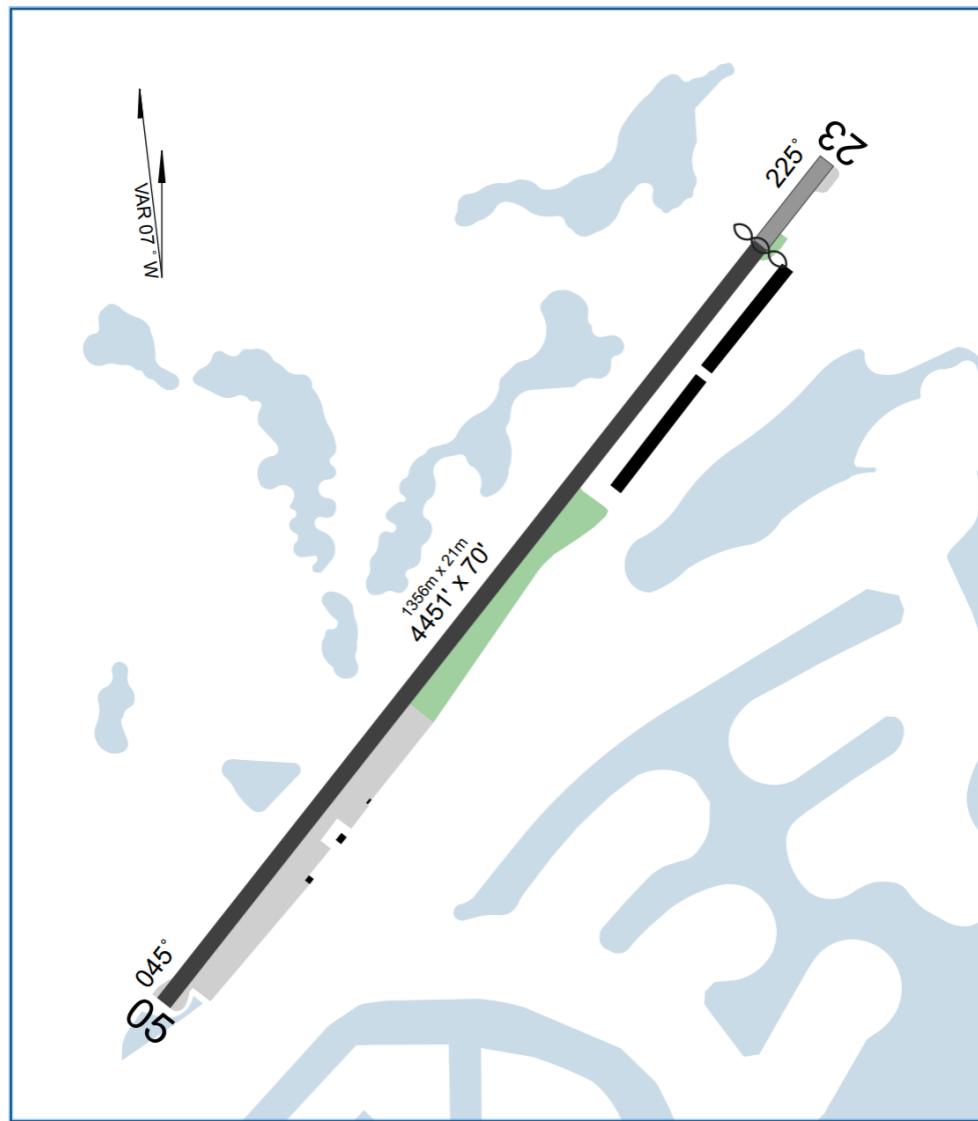
Sectional Chart and METARs (Decision Time)



07FA Airport Diagram

07FA: OCEAN REEF CLUB

KEY LARGO, FLORIDA, UNITED STATES



Bonus Resources

For additional resources, visit the VFR Mastery Hangar for this scenario.

