

GASTONIA DISTRESS



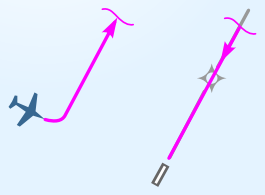
SCENARIO

It's been a simple IFR flight on a VMC morning. Now you're approaching a destination that's frustratingly hard to pick out given the suburban landscape and the just risen sun in your eyes. The distance is ticking down, ATC is getting impatient, and the nearby Class B limits your options to maneuver.

CHOICES

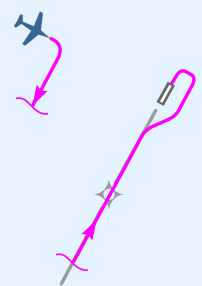
CHOICE 1

Request the RNAV (GPS) Rwy 21 and wait as needed to get vectors.



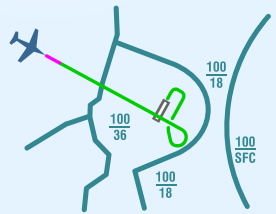
CHOICE 2

Request the RNAV (GPS) Rwy 3 with plans to sidestep into the left downwind.



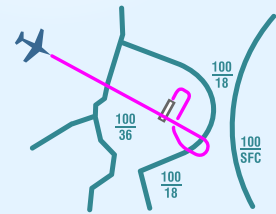
CHOICE 3

Cancel IFR and continue VFR.



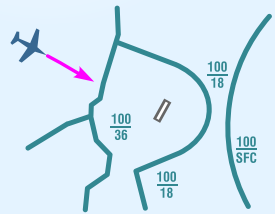
CHOICE 4

Request a contact approach.

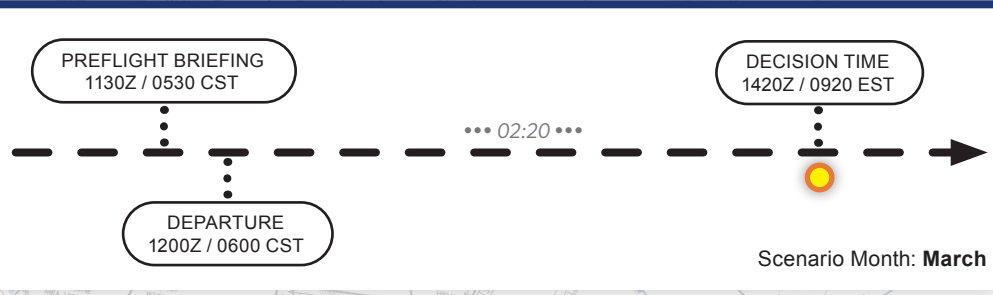


CHOICE 5

Continue and wait until you see the airport.



Timeline



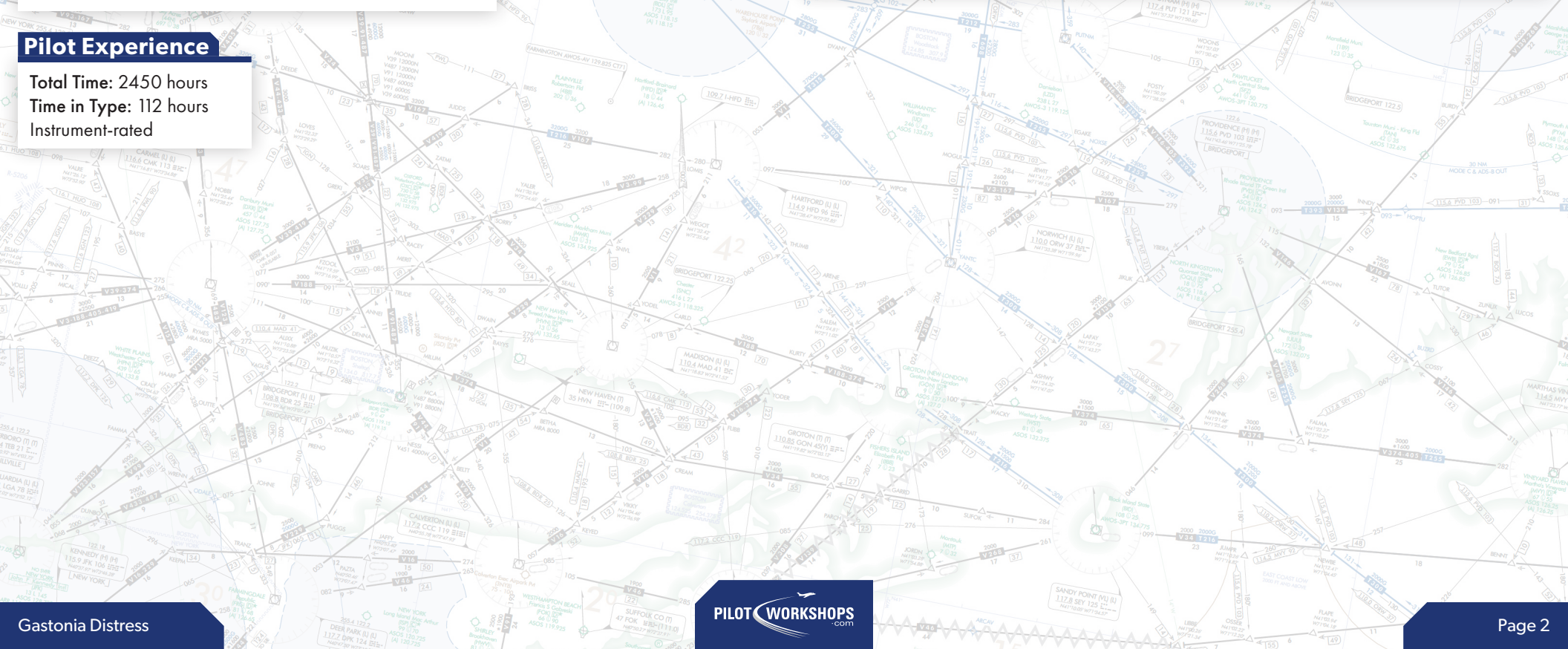
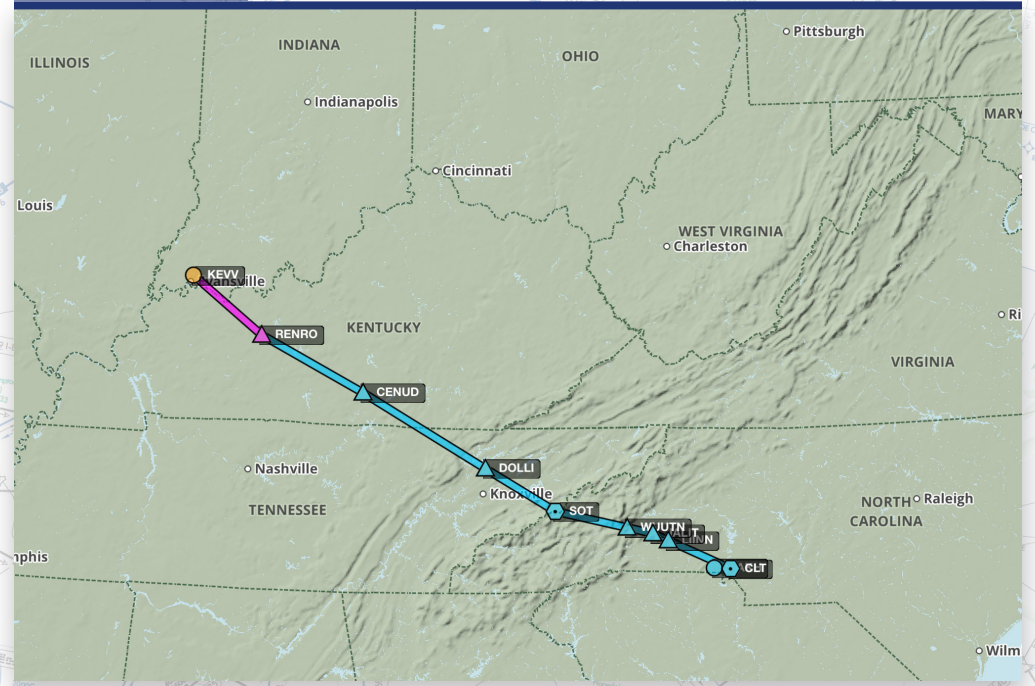
Flight Planning Information

Aircraft Beechcraft G36 Bonanza	Estimated Flight Time (hh:mm) 02:23	
Cruise Altitude 9000 feet	Fuel on Board (hh:mm) 06:28	
Cruise Speed 152 KTS	Number Aboard 1	
Departure KEVV	Destination KAKH	Alternate NA
Route RENRO CENUD DOLLI SOT.LIINN3		

Pilot Experience

Total Time: 2450 hours
Time in Type: 112 hours
Instrument-rated

Scenario Area



Flight Categories, METARs, and TAF (Preflight)

KEVV METAR

KEVV 111054Z 0000KT 10SM CLR M02/M04 A3026

RENRO

CENUD

DOLLI

SOT

WUJTN

LIT
LIINN

CLT

KCLT METAR and TAF

KCLT 111052Z 2200KT 10SM CLR 02/M07 A3011
TAF KCLT 110959Z 1110/1212 28004KT P6SM SKC
FM11200 26005KT P6SM FEW200
TEMPO 1114/1118 28006KT

KAKH METAR

KAKH 111054Z AUTO 24006KT 10SM CLR 02/M07 A3012

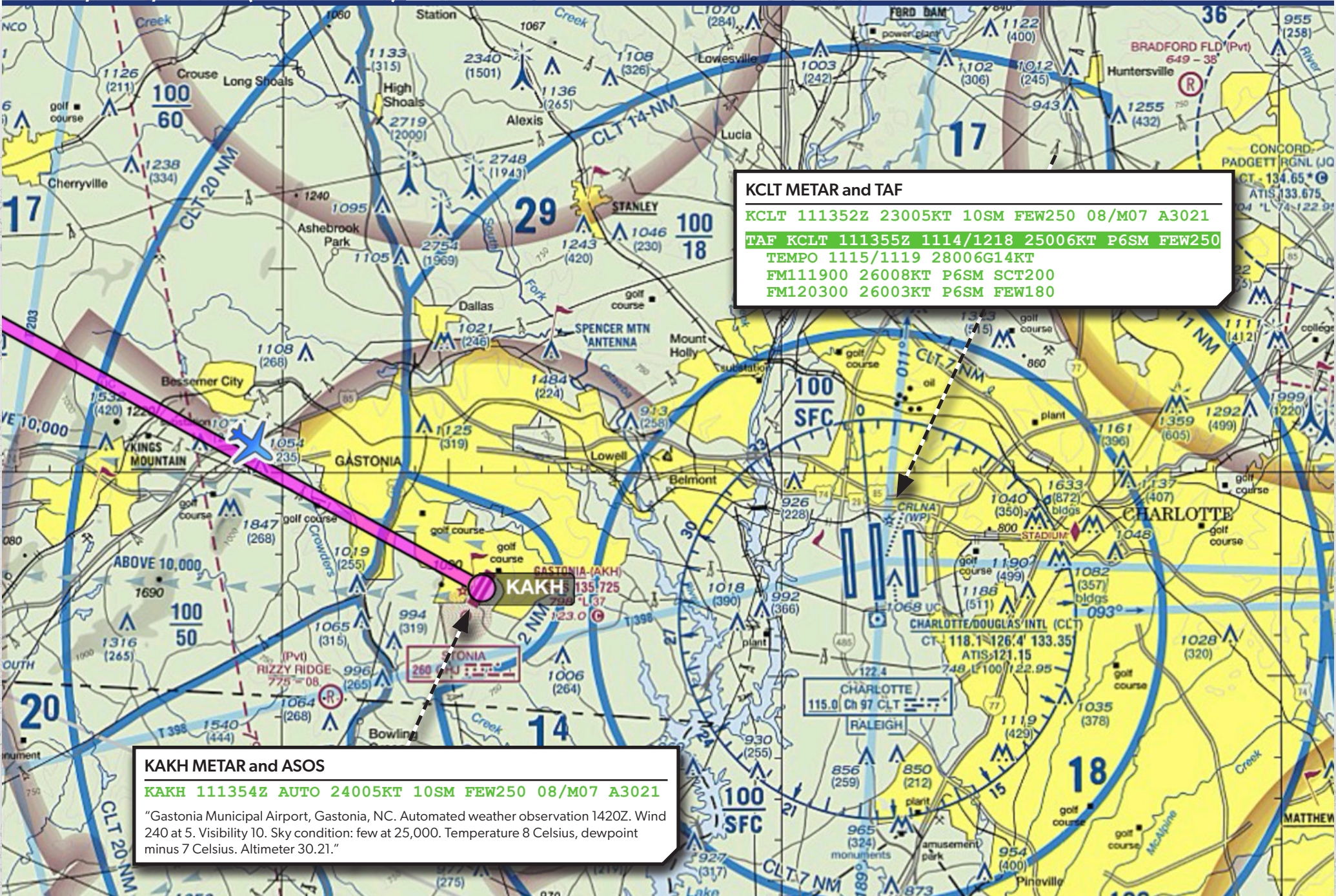
METARS, ASOS, and TAF (Decision Time)

KCLT METAR and TAF

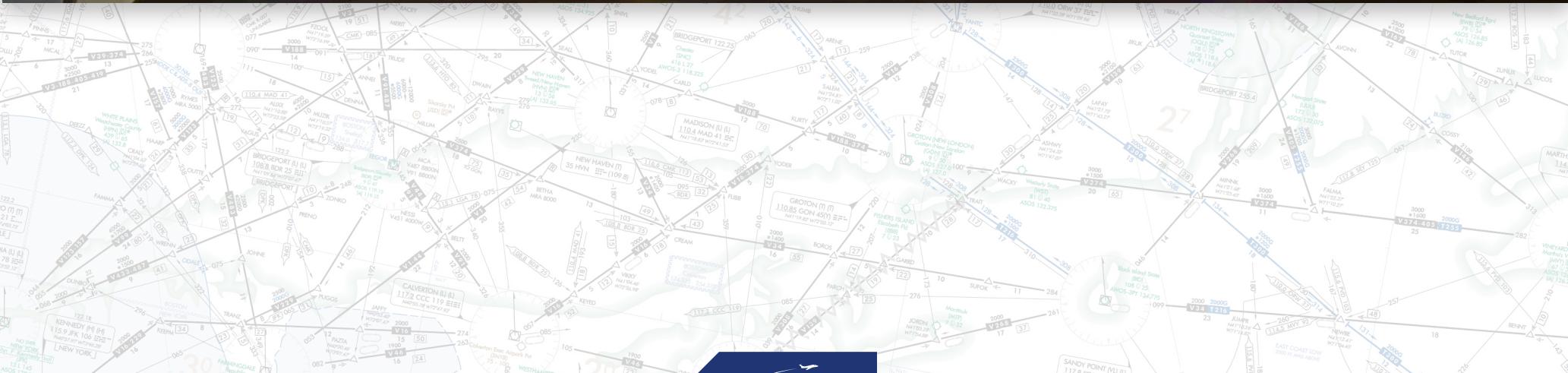
KCLT 111352Z 23005KT 10SM FEW250 08/M07 A3021
TAF KCLT 111355Z 1114/1218 25006KT P6SM FEW250
TEMPO 1115/1119 28006G14KT
FM111900 26008KT P6SM SCT200
FM120300 26003KT P6SM FEW180

KAKH METAR and ASOS

KAKH 111354Z AUTO 24005KT 10SM FEW250 08/M07 A3021
"Gastonia Municipal Airport, Gastonia, NC. Automated weather observation 1420Z. Wind 240 at 5. Visibility 10. Sky condition: few at 25,000. Temperature 8 Celsius, dewpoint minus 7 Celsius. Altimeter 30.21."



Cockpit View (Decision Time)



KAKH RNAV (GPS) RWY 21

GASTONIA, NORTH CAROLINA

AL-6081 (FAA)

22251

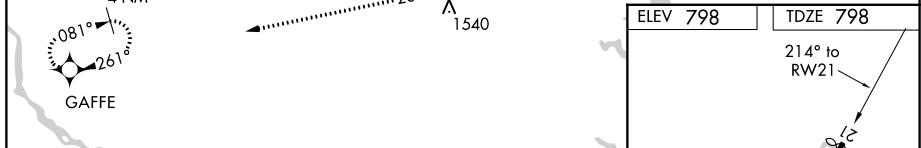
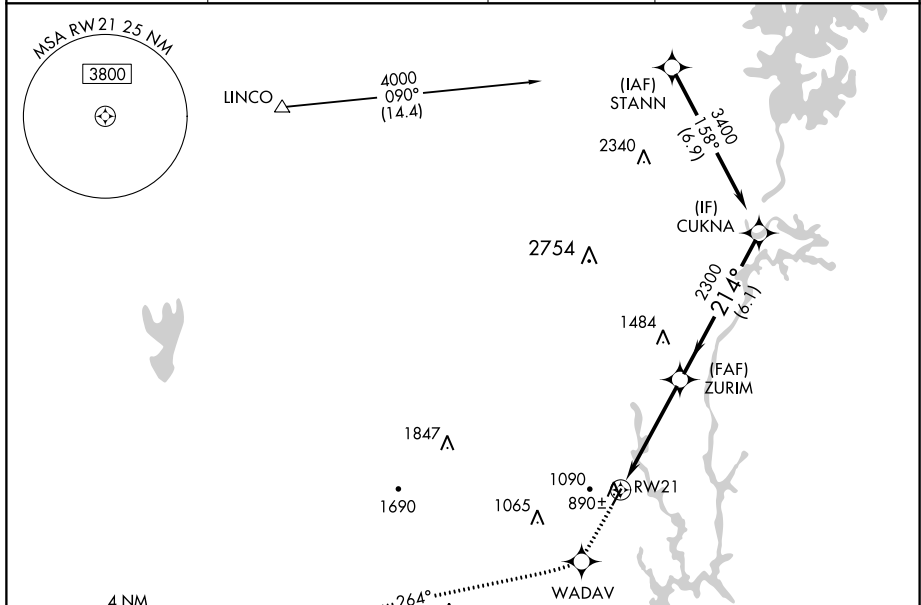
RNAV (GPS) RWY 21 GASTONIA MUNI (AKH)

WAAS CH 50402 W21A	APP CRS 214°	Rwy ldg TDZE 798 Apt Elev 798	3688
--	------------------------	---	-------------

RNP APCH.
 ▼ If local altimeter setting not received, use Charlotte/Douglas Intl altimeter setting and increase all DA/MDAs 40 feet.
 ▲ Rwy 21 helicopter visibility reduction below ¾ SM NA.

MISSED APPROACH: Climb to 3200 direct WADAV and via 264° track to GAFFE and hold.

ASOS 135.725	CHARLOTTE APP CON 120.05 257.2	CLNC DEL 127.2	UNICOM 123.0 (CTAF) 0
------------------------	--	--------------------------	---------------------------------



3200	WADAV	tr 264°	GAFFE	VGSI and RNAV glidepath not coincident (VGSI Angle 3.00/TCH 38).
				CUKNA
				ZURIM
				RW21
				Procedure Turn NA
				GP 3.00° TCH 40
				3769 x 100
				0.4% Gr
				3

GASTONIA, NORTH CAROLINA
Orig-B 15AUG19

35°12'N-81°09'W

GASTONIA MUNI (AKH)
RNAV (GPS) RWY 21

KAKH RNAV (GPS) RWY 3

GASTONIA, NORTH CAROLINA

AL-6081 (FAA)

22251

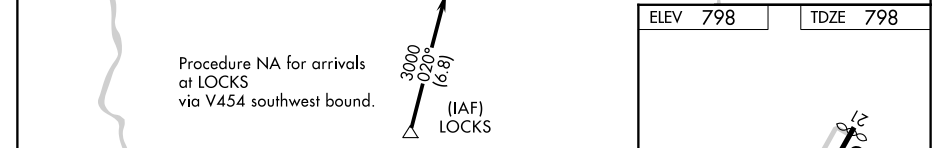
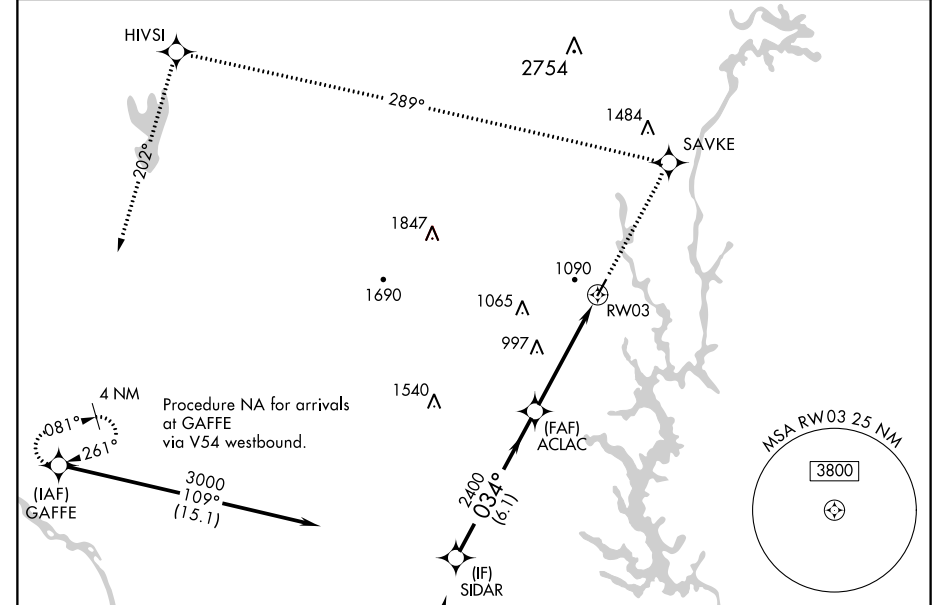
RNAV (GPS) RWY 3 GASTONIA MUNI (AKH)

WAAS CH 90302 W03A	APP CRS 034°	Rwy ldg TDZE 798 Apt Elev 798	3769
--	------------------------	---	-------------

RNP APCH.
 ▼ If local altimeter setting not received, use Charlotte Douglas Intl altimeter setting and increase all DAs/MDAs 40 feet.
 Inoperative table does not apply.

ODALS
 MISSED APPROACH: Climb to 3200 direct SAVKE and via 289° track to HIVSI and 202° track to GAFFE and hold.

ASOS 135.725	CHARLOTTE APP CON 120.05 257.2	CLNC DEL 127.2	UNICOM 123.0 (CTAF) 0
------------------------	--	--------------------------	---------------------------------



3200	SAVKE	tr 289°	HIVSI	GAFFE	VGSI and RNAV glidepath not coincident (VGSI Angle 3.00/TCH 26).
					SIDAR
					Procedure Turn NA
					GP 3.00° TCH 40
					3769 x 100
					0.4% Gr
					3

GASTONIA, NORTH CAROLINA
Amdt 1B 15AUG19

35°12'N-81°09'W

GASTONIA MUNI (AKH)
RNAV (GPS) RWY 3

KAKH Chart Supplement

GASTONIA MUNI (AKH)(KAKH) 4 S UTC-5(-4DT) N35°12.16' W81°08.99'

798 B NOTAM FILE AKH

RWY 03-21: H3769X100 (ASP) S-24 MIRL 0.4% up SW

RWY 03: ODALS. PAPI(P2R)—GA 3.0° TCH 26'. Road.

RWY 21: PAPI(P2L)—GA 3.0° TCH 38'. Thld dspcd 81'. Trees.

SERVICE: S4 FUEL 100LL, JET A1+ LGT ACTVT ODALS Rwy 03; PAPI Rwy 03 and 21; MIRL Rwy 03-21—CTAF.

NOISE: Noise abatement: from 0300-1100Z pilots are requested to use Rwy 21 as calm wind rwy & do runups on ramp; not rwy end. To avoid low alt turns to the west req clnc thru Class B asp from Charlotte Apch.

AIRPORT REMARKS: Attended Mon-Sun 1300-2200Z. Unatndd Christmas Day. Deer on and invof arpt. For svc after hrs call 704-201-1500. Rwy 03-15' road 292' fm thr L and R of cntrln. Rwy 21-50' drop-off 300' fm dspcd thr L & R of cntrln and unmarked p-lines 370' fm dspcd thr L & R of cntrln. Rwy 03-21 no line of sight btn rwy ends.

AIRPORT MANAGER: 704-869-7844

WEATHER DATA SOURCES: ASOS 135.725 (704) 868-9034.

COMMUNICATIONS: CTAF/UNICOM 123.0

Ⓜ **CHARLOTTE APP/DEP CON** 120.05

CLNC DEL 127.2

CLEARANCE DELIVERY PHONE: For CD etc Charlotte Apch at 704-359-0241.

RADIO AIDS TO NAVIGATION: NOTAM FILE CLT.

CHARLOTTE (L) (L) VOR/DME 115.0 CLT Chan 97 N35°11.42' W80°57.11' 279° 9.8 NM to fld. 732/5W.

DME portion unusable:

015°-050° byd 25 NM blo 3,000'

050°-100° byd 25 NM blo 2,500'

185°-202° byd 15 NM

203°-220°

270°-350° byd 20 NM blo 5,000'

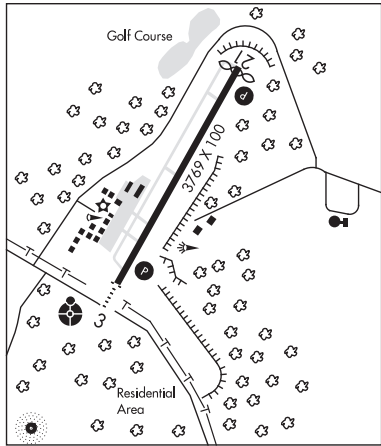
VOR/DME controlled by Charlotte ATCT

VOR unusable:

203°-220°

STONIA NDB (MHW) 260 GHJ N35°11.49' W81°09.47' at fld. 750/6W. NOTAM FILE RDU. NDB unmonitored

2330-1130Z dur std time, 0030-1130Z dur dalgt saving time.



Bonus Resources

For additional resources, visit the IFR Mastery Hangar for this scenario.

